

a purpose built venue,
flexible and friendly,
modern and stylish,
accessible, responsible,
dependable **etc.**



etc.venues

the first of its class, vastly experienced, brilliantly connected, a vibrant team in an excellent location, a smile every time, goes the extra mile etc.



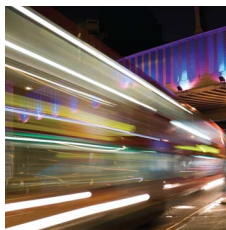
In addition to the main rooms there are five smaller rooms for breakout sessions, interviews or meetings. There is also a dedicated Trainer's room equipped with telephone, PC and internet access.



A warm welcome awaits you from our experienced and friendly team at Avonmouth House. Set up by trainers frustrated at the lack of a truly focused training and meeting environment – Avonmouth House has been providing quality meeting and training space ever since.

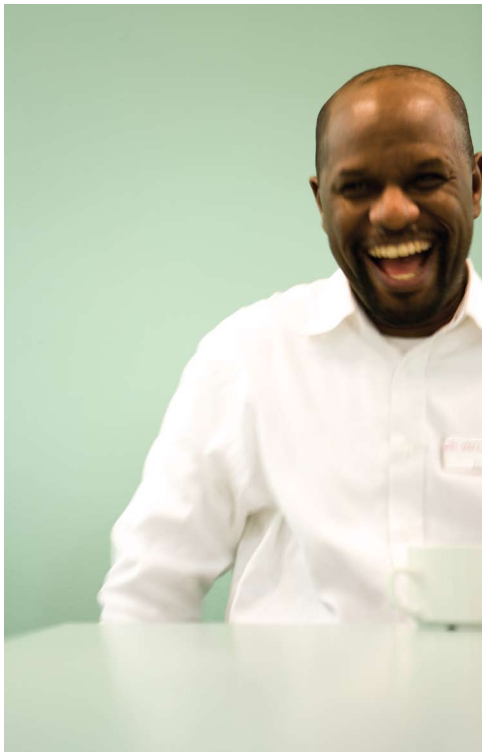
We've developed a wealth of experience over the years and pride ourselves on our relationships with our clients who return to us time and again. They trust our expertise, well designed training and meeting rooms and our own team of chefs to provide them with everything they need for a successful event.

Just a short walk from Borough and Elephant and Castle underground stations, it is also easily accessible from London Bridge mainline station. Avonmouth House pioneered our award winning reputation for people investment, environmental policies and diversity in the vibrant Southwark area of South London.





When it's time to refuel, make your way to our recently refurbished bistro. Our team of in-house chefs prepare a range of delicious options, from healthy brain food to tasty treats. Relax, sit back and enjoy a cappuccino or latte from our specialist 'bean to cup' coffee machines, take time to soak up the contemporary art on display or check your emails via our free wireless internet access available throughout the building.



food for
thought
etc.

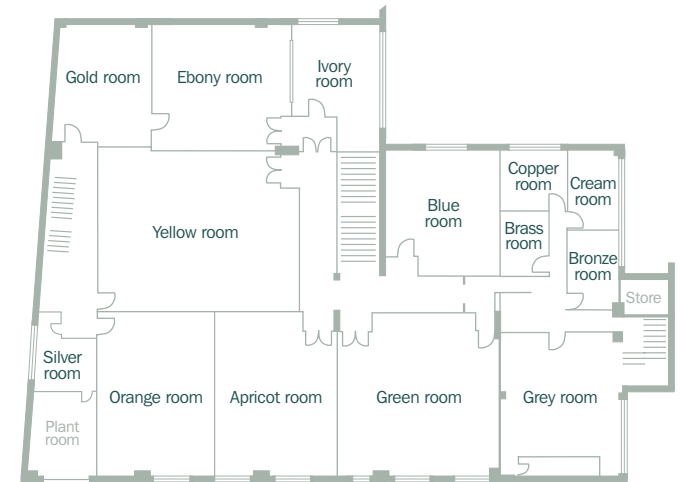
ect, revive etc.



Room capacities	Dimensions	Theatre				
		Theatre	Cabaret	U-Shape	Classroom	Boardroom
Rose suite	13.7 x 9.1m	150	60	34	75	40
Yellow	11.3 x 9.1m	100	46	24	45	36
Lilac	9.1 x 9.1m	75	30	24	40	26
Green	9.1 x 9.1m	75	30	24	40	26
Orange	6.7 x 9.1m	40	24	18	26	20
Apricot	6.7 x 9.1m	40	24	18	26	20
Grey	7 x 6m	40	24	16	20	20
Blue	7 x 6.7m	40	24	16	20	16
Gold	6.7 x 4.8m	25	10	14	16	16
Ebony	7 x 7.9m	50	30	20	30	22
Cream	7 x 4.57m	20	-	-	-	10
Bronze	4.3 x 3m	20	-	-	-	10
Brass	4 x 3.7m	15	-	-	-	8
Copper	4 x 3.7m	15	-	-	-	10
Silver	3 x 3.35m	15	-	-	-	8
Ivory	7 x 4.9m	-	-	-	-	10



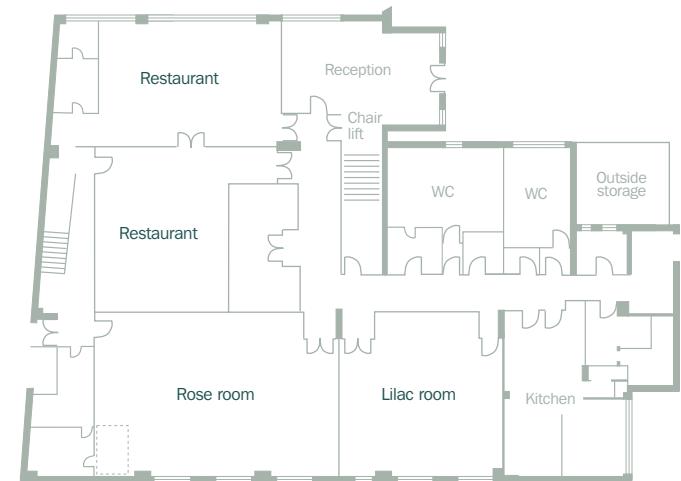
First Floor



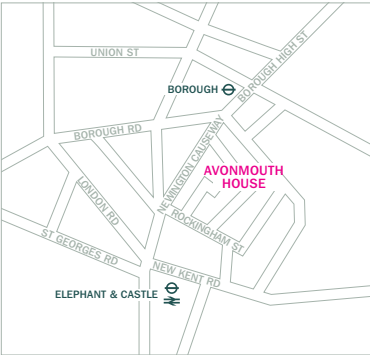
Our 16 rooms come with state-of-the-art AV equipment and all the essential tools you'll need, as well as natural daylight to keep you stimulated and air conditioning to keep you comfortable. Both levels of the building are fully accessible for those with mobility issues and all the rooms have induction loops.

Avonmouth's flexible space has conference and training rooms conveniently close to syndicate rooms and can accommodate up to 150 delegates in the largest room.

Ground Floor



How to find Avonmouth House



6 Avonmouth Street (off Newington Causeway)



The etc.venues Portfolio

With over fifteen years of experience and an expanding portfolio of venues, we are one of the UK's leading independent providers of dedicated training, conference and meeting space. If you need a venue for any occasion you can trust us to deliver.

All our venues are within easy access of rail, bus and tube links making us easy to find and simple to blend into your environmental transport policy.

To appreciate the reliability and flexibility of Avonmouth House for yourself please call the venue team on 020 7940 7370 or email avonmouth@etcvenues.co.uk.

If you would like to book a show round at any of our other venues call 020 7105 6090 or email venues@etcvenues.co.uk

Alternatively for up to the minute information on all of our venues, including location maps, floorplans, capacities, photos and our CSR statement visit www.etcvenues.co.uk

Our central London locations

