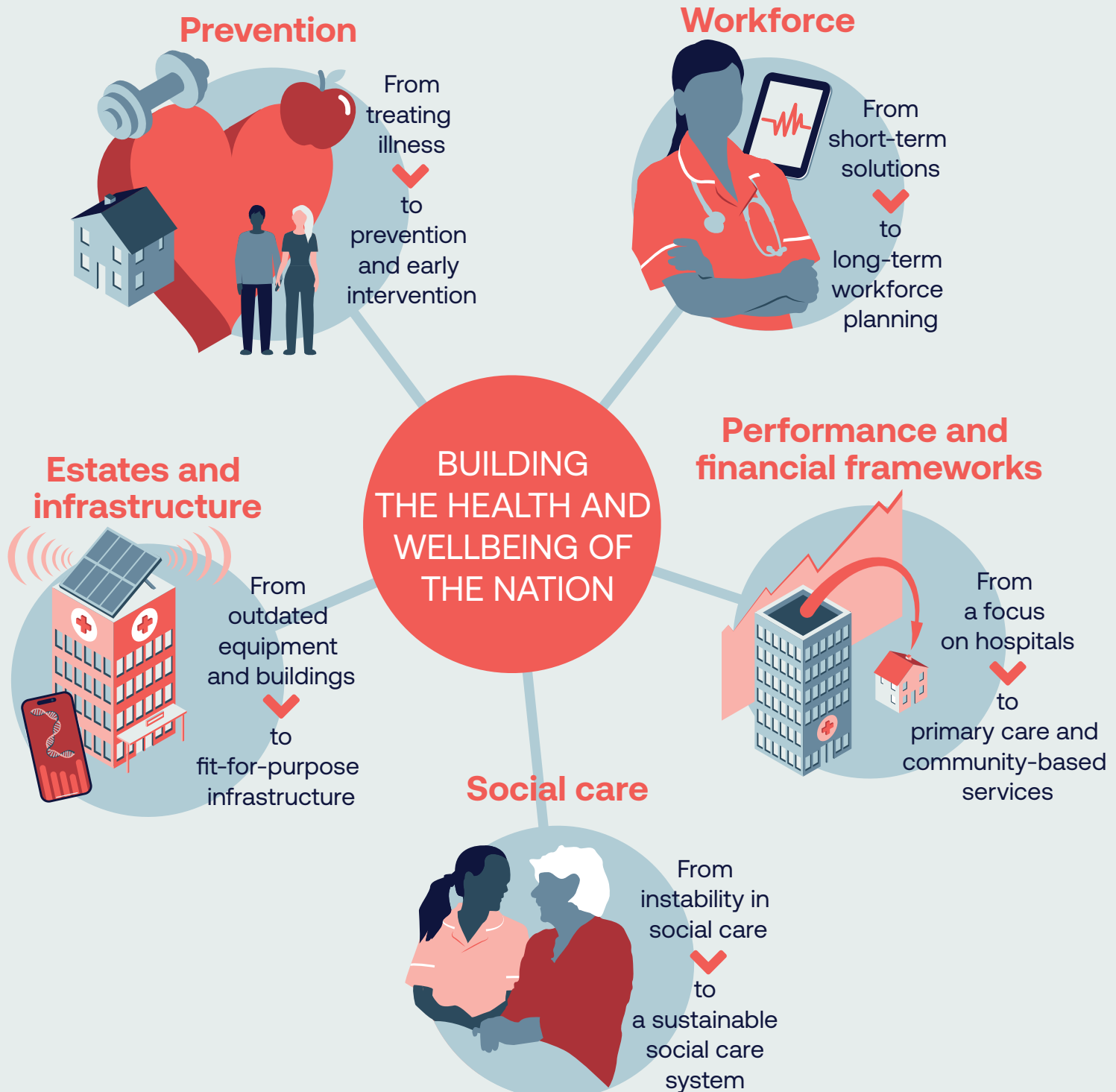




Our **mission** is to build the health and wellbeing of the nation, supported by high-quality health and social care services and a partnership-led approach to population health and wellbeing that embraces the public, private and third sectors.

To achieve this, the next Welsh Government must focus on five areas of transformation:





To build the health and wellbeing of the nation the next Welsh Government needs to:

PREVENTION

Deliver a cross-government national strategy to improve health and wellbeing and reduce inequalities

This will shift the focus from simply treating illness to promoting health and wellbeing, reducing inequalities and tackling the wider determinants of health, boosting economic growth and supporting people to be active partners in their own health and wellbeing.

WORKFORCE

Invest in a long-term plan for the NHS and social care workforce and their education

This will enable the implementation of multi-professional, digitally enabled, motivated, engaged and valued workforce across the NHS and social care.

PERFORMANCE AND FINANCIAL FRAMEWORKS

Publish a joint health and social care performance and financial framework for seamless care and support

This framework should emphasise prevention, effective treatment and timely support for individuals, and be measured consistently across health and social care, support joined up models of care and provide care closer to home.

SOCIAL CARE

Establish an independent rapid review to develop a long-term agreement on the sustainability of the social care system

The review must address system-wide challenges and stabilise the social care system through sustainable funding and resourcing, considering workforce pay and conditions, access to publicly funded care and transparency and consistency around the collection and reporting of social care data.

ESTATES AND INFRASTRUCTURE

Launch a long-term capital and infrastructure strategy

Investing in the entire NHS and social care infrastructure, including buildings, equipment and digital infrastructure; but also leveraging technological and research advancements including genomics and AI. This will enable the NHS and social care to drive efficiency, productivity and sustainability, while improving patient outcomes and the physical working environment for staff.